

TDCORE A8 - 15" Touch EPOS

Solid aluminium casing, high quality components and a true flat splash-proof screen, all at a competitive price.

A professional quality touch epos system with beautifully integrated extras that does it all - in style!

The **TDCORE A8** is the stylish EPOS touch system with a smaller footprint, modern sleek design, smarter cable management and extra strong cast aluminium construction. If you need a competitively priced, high performance full-function EPOS system the **TDCORE A8** is the model for you.

- Rear VFD or TFT customer screens, MSR, Dallas all smartly integrated and easily fitted
- Extra reliability and performance with a clever integrated fanless cooling design. Full 3-year RTB warranty
- Smart cable tidy with integral strain relief means better reliability. 135 degree tilt range
- True flat 'no bezel' touch screen for harsh environments (to IP55) with high grade LED screen and upgraded touch systems
- Small footprint but high stability. Wall mount option. 6 external USB ports (+2 internally)
- Maximum performance with quad core 2GHz processor and big 4GB RAM as standard – easily capable of running Windows 10
- Quieter, faster and more reliable - no moving parts, 128GB solid state disk. Fanless design



TDCORE : QUALITY EPOS EQUIPMENT AT ULTRA-COMPETITIVE PRICES



With MSR and Dallas reader



With 10.1" customer display



With VFD customer display



Slim, strong, elegant design



10.1" LCD USB customer display



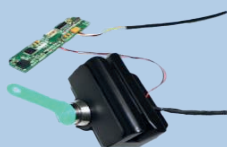
VFD 2x20 serial customer display



Wall mounting option



Easy fit magnetic strip reader



Easy fit Dallas / MSR combo



Onboard WiFi (included)




'No Bezel' true flat touch screen



135 degree tilt angle

TDCORE A8 - specifications and performance data

System controller		Power supply	
Controller Board	J6412 Elkhart Lake	Type	External, inline switch mode
Processor	Quad Core Intel 2GHz	Output cable	1.5M DC cable with male jack
Hard Disk	128GB SSD	Output power	DC12V/5A
RAM	4GB RAM	Input power	100-250V/50-60Hz
Screen		Input cable	1.5M IEC with UK 3 pin plug
LCD screen	Industrial Grade 15" 1024 x 768	Operating Systems	
Brightness	250cd/m2 LED backlit	Win 10 IoT	Pre-installed
Splashproofing	IP55 front screen	Can also run	Win 10, 11 or Linux
Response time	5 milliseconds touch	Size & weight	
Touch control	5 wire resistive or capacitive	Unit	36x20x34cm (lxdxh) 5.9kg
Cooling		Packaged size	43x27x41cm (lxdxh) 7.5kg (2 off 16kg)
Fanless	Noiseless aluminium heat sink	Warranty	
Inputs & Outputs		Period & terms	3 years RTB
Serial	2 x RS232 M 9 pin D (powered 5/12v) + internal com 2 for customer display		
LAN	1 x RJ45 female 1GBps		
USB	8 (4 in coms box, 2 external, 2 internal)		
Video	HDMI F port and VGA port		
Audio	2 Ports, Mic in, Line out, speaker inside		
DC Power in/out	Female DC Jack in, extra DC power out		
Cash Drawer	No 24V output - use external USB trigger or printer		

Unit B8 Ratio Park, Finepoint Way, Kidderminster, DY11 7FF

01299 488031

info@tills-direct.com