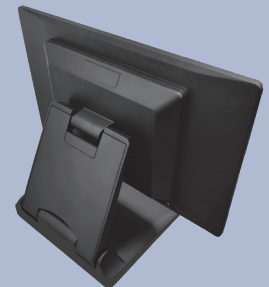


## **TDCORE A9S - 15.6" Widescreen Touch EPOS**

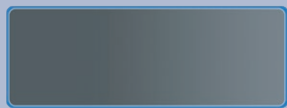
A lightweight, flexible matt aluminium body with a thin bezel. The one-piece design makes the overall body very stable and maintains excellent balance.

The **TDCORE A9S** is a thin and light 15.6" Widescreen Windows POS system with a streamlined one-piece design, with only one bracket supporting its entire lightweight body.

- Stylish super-slim wide metal screen casing - just 0.8cm deep at edge
- 15.6" 1920 x 1080 Capacitive Touchscreen
- Quad-Core 2GHz Intel J6412 CPU - can run Windows or Linux
- 4GB DDR4 RAM, 128GB SSD with 3-year warranty
- Lightweight, flexible matt aluminium body for stability, industrial touchscreen
- Able to run Windows 8, 10, 11 or Linux (**TDCORE** version pre-installed with Win 10 IoT)



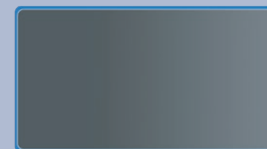
**TDCORE : QUALITY EPOS EQUIPMENT AT ULTRA-COMPETITIVE PRICES**



2-line LCD  
customer display



2-line VFD  
customer display



11.6" customer display  
(1366 x 768)



Onboard Wifi



Magnetic Strip Reader  
(MSR)



Onboard Sound  
with speaker

## TDCORE A9S - specifications and performance data

System controller and storage		Inputs & Outputs	
Controller Board	Intel® Elkhart Lake Celeron J6412	SATA Slot	1 x SATA Slot
Processor	Quad Core Intel 2GHz	Serial	2 x COM (RJ45 Port)
Hard Disk	128GB M.2	USB Ports	2 x USB 3.0, 4 x USB 2.0
RAM	4GB DDR4 RAM	LAN	1 x RJ-45, Giga LAN, 1000/100
Screen		Power Input	12V 5A DC 60W
LCD screen	15.6" LED TFT	Audio Jack	1 x Line Out & MIC, 1 x Internal Speaker
Brightness	250cd/m2 LED backlit	Cash Drawer	1 x RJ-12
Splash/Dust proofing	Approx IP55	Show Output	1 x Type-C (USB+EDP), 1xHDMI
Aspect Ratio	16:9 Widescreen (Landscape)	WiFi Socket	1 x M.2 (Key-E, 2230, support Wi-Fi & BT)
Touch control	Capacitive Touchscreen	Size & Weight	
Compliance & Temperature		Packaged size	42.5x26x40.5 cm (LxDxH) 12kg
Compliance	CE/ROHS/ FCC	Warranty	
Operating Temperature	20%~80% RH Non-condensing	Period & terms	36 months RTB
Storage Temperature	-20°C~60°C	Options	
Storage Humidity	20%~85% RH non-condensing	MSR	2*20 LCD customer display
Operating System		Speaker	2*20 VFD customer display
Win 10 IoT	Pre-installed	WiFi	11.6 inch customer display (1366*768)
Can also run	Win 10, 11 or Linux		

Unit B8 Ratio Park, Finepoint Way, Kidderminster, DY11 7FF

01299 488031

info@tills-direct.com

